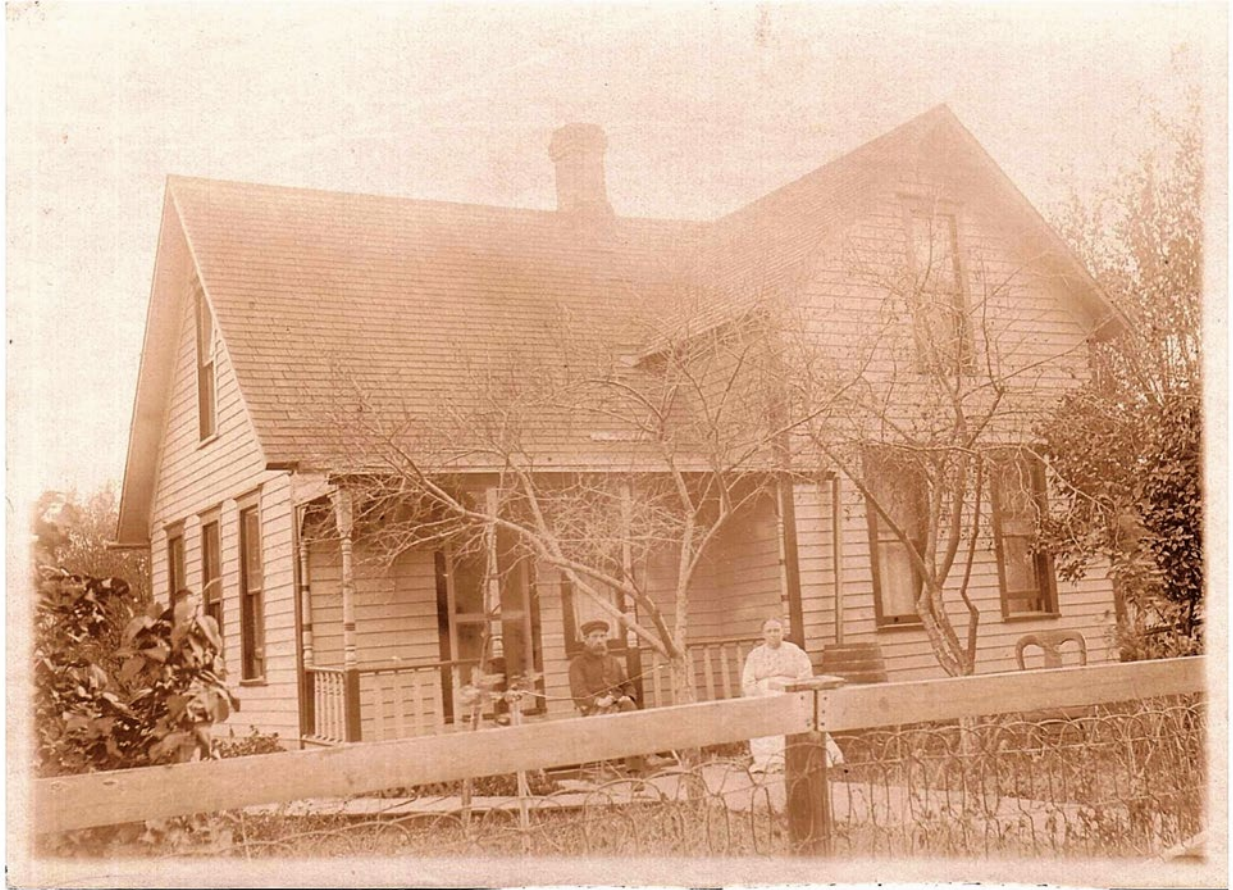


C.M. & Anna Louisa Anderson's home  
505 E. Main Street, Hartington, NE (built in 1900)



*Figure 1 - Anna Louisa Anderson with son Reuben in front of their home (believe Reuben is 4-5 years old in this photo so would have been taken 1898-1899?)*

C.M. & Anna Louisa Anderson's home  
505 E. Main Street, Hartington, NE (built in 1900)



*Figure 2 - C.M. & Anna Louisa Anderson sitting in front of their home (best guess photo is taken some time in the years 1900-1915?)*



C.M. & Anna Louisa Anderson's home  
505 E. Main Street, Hartington, NE (built in 1900)



*Figure 3- C.M. & Anna Louisa Anderson with grand-daughters Katherine ("Katie") and Vera (Gust's children) in front of their home (best guess photo taken around 1925?)*

C.M. & Anna Louisa Anderson's home  
505 E. Main Street, Hartington, NE (built in 1900)



*Figure 4 - Anna Louisa Anderson with husband C.M. on horse with their grand-daughter Vera (Gust's child) in their yard (best guess photo taken around 1926-27)*



C.M. & Anna Louisa Anderson's home  
505 E. Main Street, Hartington, NE (built in 1900)



*Figure 5 - C.M. & Anna Louisa Anderson's home (August 2012 from Google Maps)*

C.M. & Anna Louisa Anderson's home  
505 E. Main Street, Hartington, NE (built in 1900)



*Figure 5 - C.M. & Anna Louisa Anderson's home (May 2018). House had a fire a year or two ago (inside is damaged)*



C.M. & Anna Louisa Anderson's home  
505 E. Main Street, Hartington, NE (built in 1900)



*Figure 6 - back of home – an addition or two (May 2018)*

C.M. & Anna Louisa Anderson's home  
505 E. Main Street, Hartington, NE (built in 1900)



*Figure 7 - barn behind house (looking from back of house, May 2018) – this is where C.M. kept his horse*



C.M. & Anna Louisa Anderson's home  
505 E. Main Street, Hartington, NE (built in 1900)



*Figure 8 - barn behind house (from alley, May 2018)*